



WATER CONSERVATION

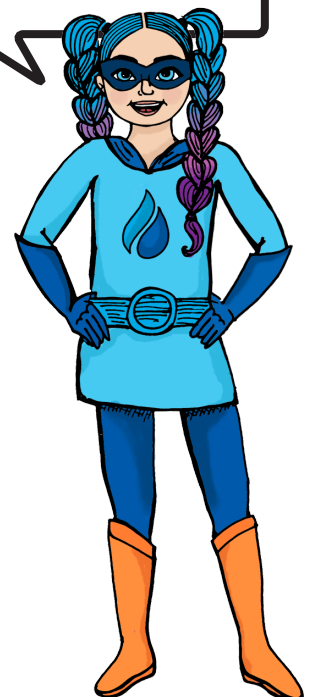
Water is Important

1 Name three household appliances that have a WELS label. Then use the information you learned during the class discussion to estimate their water usage.

APPLIANCE	APPLIANCE	APPLIANCE

2 What are four things you could do at home to conserve water?

1.
2.
3.
4.



3 Work with a partner to do the experiment.

Experiment

Title How much water do I use to brush my teeth?

Aim To measure how much water you use when brushing your teeth for 2 minutes

Materials You will need:

- a large container to fit into a sink
- a timer
- a measuring jug (marked with millilitres or litres).

Method Work with a partner. One person will pretend to brush their teeth for 2 minutes. The other person will use the timer.
Do Part A first, then Part B. Make sure you write down your results.

Part A

1. Predict how much water you will use if the tap is left on for 2 minutes.

2. Put the container into the sink to collect the water.
3. One person turns on the tap. The other person starts the timer as soon as the tap is turned on. After 30 seconds, turn off the tap.

Part B

1. Predict how much water you will use in 2 minutes if the tap is turned on only for rinsing.

2. Put the container into the sink to collect the water.
3. For 2 minutes, one person pretends to brush their teeth while the other person starts the timer for 2 minutes. The person brushing their teeth will only turn on the water when they pretend to rinse.

Results Measure the collected water. Multiply this by 4 to calculate how much water you would have collected if the tap had been left on for 2 minutes.

Dispose of the water wisely (e.g. use it to water a plant).

Was your prediction correct?

Measure the collected water.

Dispose of the water wisely (e.g. use it to water a plant).

Was your prediction correct?

Discussion Discuss your results with the class, then discuss other ways you can conserve water at home.



- 4** Using your own ideas and some you heard during the class discussion, write some ways you can conserve water when doing the following activities.

Activity	Ways to conserve water
Brushing your teeth	
Having a shower	
Taking a bath	
Washing dishes in the kitchen sink	
Using a dishwasher	
Finding a dripping tap	
Using a washing machine	
Watering the garden	
Washing the car	
Cleaning the driveway	

5 This is a take-home activity. You are going to be a Family Water Detective and give your family a star rating!

At home: Use the separate activity sheet to award your family stars for using water wisely. You can do this over two days.

At school: Once you have completed the activity at home, count your family's stars and then colour in that number of stars on the water rating label.

What tips could you give your family to improve their water rating?



TAKE-HOME ACTIVITY

Family Water Detective

Be a Family Water Detective and give your family a star rating.

For each activity, you will award your family a star if they are using water wisely.



PLAY A GAME

Grapevines & Drains

Play the game Grapevines & Drains.

You will need at least two players and a die or dice.

