

GRAPEVINES & DRAINS

Number of players

2-4 people or teams

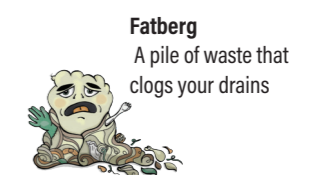
How to play

1. You will need a dice to play the game.
2. Cut out the four tokens on the right and give one to each player.
3. All players roll the dice. The person or team with the highest number goes first.
4. The first player rolls the dice and moves the number of spaces shown on the dice.
5. The next player has their turn. Allow each player to have a turn.
6. If you land on a leaky tap, move your token down the drain.
7. If you land on a water tank, move your token up the grape vine.
8. If you land on Captain Water, get an extra turn.
9. If you land on Fatberg, lose a turn.
10. If you land on River, answer one of the question cards. If you get it correct, you get another turn.
11. Continue taking turns until there is a winner.

How to win

The first player to get to 100 wins the game. To finish, you need to roll a number equal to, or higher than, the number of spaces you have left. For example, if you are on 96, you need to roll a 4 or more.

Characters



Water drop



Water bug



Lily pad



Murray cod

